

Connecting to Connect One's iChip over a USB Connection

Quick Guide

Version 1.0

For Windows XP



International:
Connect One Ltd.
20 Atir Yeda Street
Kfar Saba 44643, Israel
Phone: +972-9-766-0456
Fax: +972-9-766-0461
Email: sales@connectone.com
<http://www.connectone.com>

USA:
Connect One Semiconductors, Inc.
560 S. Winchester Blvd.
Suite 500
San Jose, CA 95128
Tel: (408) 572-5675
Fax: (408) 572-5601

Copyright © 2008-2012, Connect One Ltd.

Introduction

iChipConfig can utilize a PC's USB port to control and configure iChip CO2144SEC / CO2128SEC / CO2064SEC. To enable this feature, it is required to install a USB driver, supplied by Connect One, on a PC running Windows XP.

The driver installs a USB device that appears as an additional **Port** to the Windows 7 operating system. This port is connected as a virtual COM interface.

The USB driver is supplied as 3 separate files: sabalo.inf, iChip.inf & usbser.sys.

Installing the USB Drivers

1. Copy "sabalo.inf" and "iChip.inf" to the directory C:\WINDOWS\inf. To view the \inf directory, you must allow viewing of hidden folders in Folder Options.
2. Copy usbser.sys to C:\WINDOWS\system32\drivers.
3. Connect one end of a USB cable to your PC. Connect the other end to the USB "device" connector of the board on which the iChip CO2144SEC / CO2128SEC / CO2064SEC is mounted. For example: To II-EVB-630 evaluation board for the CO2128 by Connect One.
4. Turn on the power to the board.

Connect One

5. The “Found New Hardware Wizard” of Windows XP pops up and prompts you to install a new device driver. When prompted with the message “Can Windows connect to Windows Update to search for software?” Select **No, not this time**. See Figure 1.

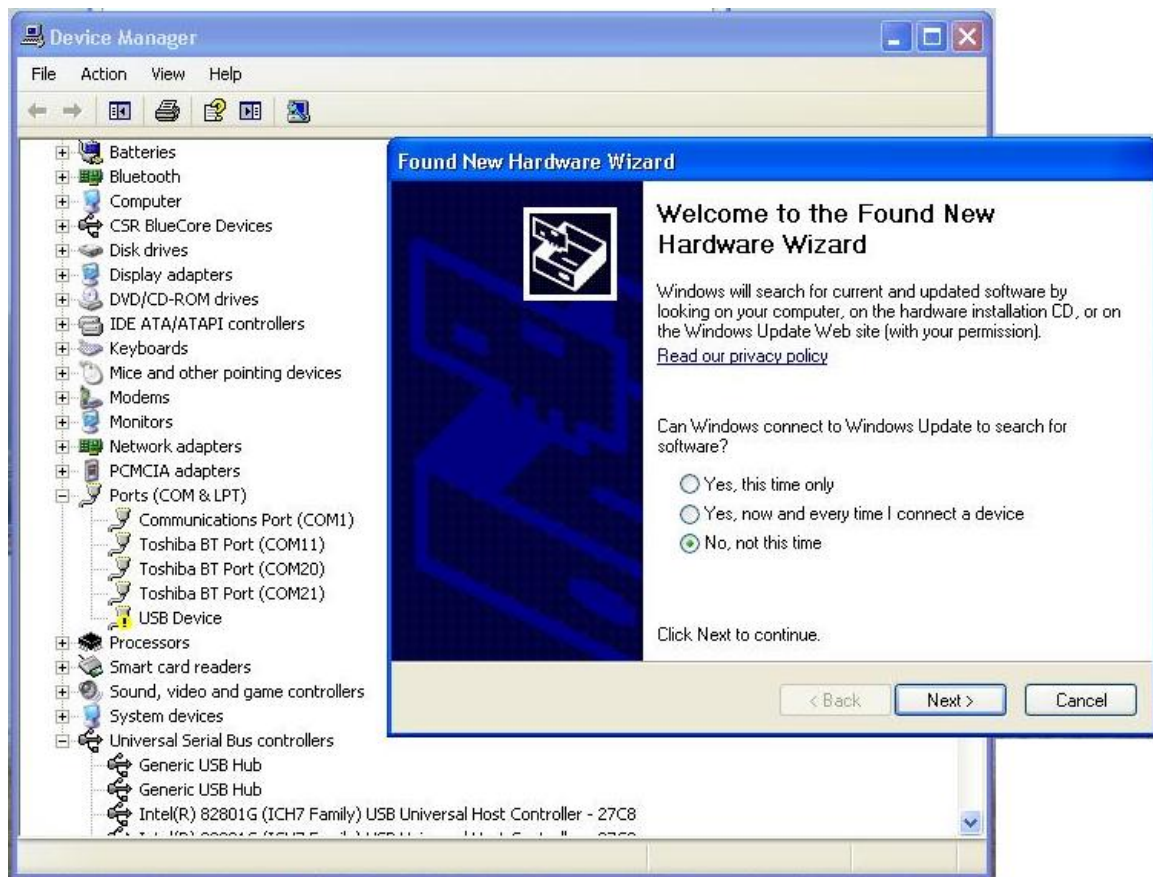


Figure 1

- When prompted with the message “What do you want the wizard to do?” Select **Install the software automatically (Recommended)**. See Figure 2.

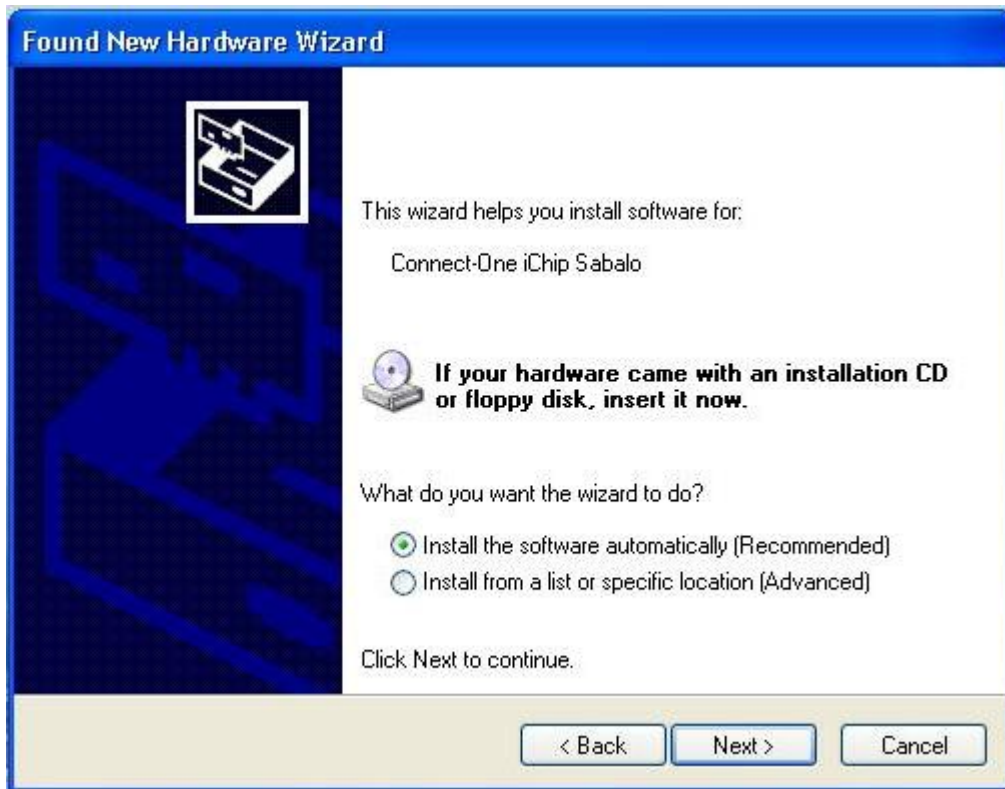


Figure 2

- Windows will install the driver. See Figure 3.



8. When a pop-up window reports that the software for the new hardware — Connect One Sabalo USB Device — has not passed Windows Logo testing, select **Continue Anyway**. See Figure 4.



Figure 4

9. The USB driver is now installed and ready for use. See Figure 5.



Figure 5

To view the properties of the new driver:

1. From the Windows task, click **Start > Settings > Control Panel**.
2. Double-click the **System** icon.
3. In the dialog box displayed, select the **Hardware** tab.
4. Click the **Device Manager** button.
5. If the Flash memory is empty: Open the **Modems** list to find the Connect One Sabalo USB Device. The virtual COM port number will be written in the properties information of this device.
6. If the Flash memory is already programmed: Open the **Ports** list to find the Connect One iChip Sabalo port number. See Figure 6.

Connect One

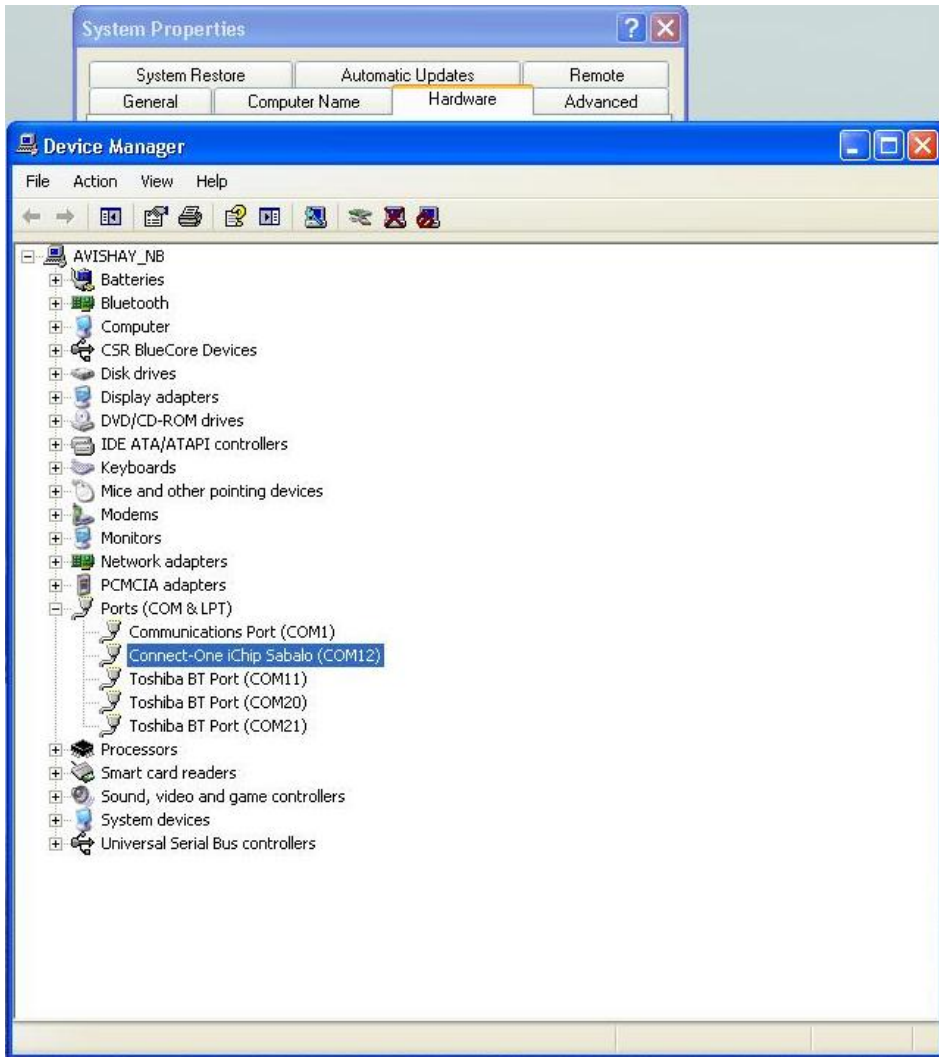


Figure 6

FAQ:

Q: What should I do if Windows does not automatically locate the driver for the new hardware?

A: Please use the “Back” button to browse to the previous step and manually browse to the directory of the iChip Configuration Utility, usually located in “C:\Program Files\iChipConfig”.

Q: What should I do if Windows identifies new hardware but the wizard does not pop up automatically?

A: You can invoke the wizard manually from the Control Panel.

Q: What should I do if Windows notifies me that “USB Device Not Recognized”?

A: Please make sure that the cable is connected properly to the board side. Then disconnect the USB cable from the computer side and try to connect it to another USB port. Prefer a port which is located on the computer rather than use a USB hub.

Q: Should I repeat this installation procedure every time I connect the board over USB connection to the same computer?

A: No. The installation is required only on the first time the board is connected to each computer. Afterwards the board will be automatically recognized and ready to communicate over USB.